



Medicine Hygiene

Elmasteam 4⁵ med

We set new standards for the steam jet cleaning of surgical instruments

- Quality product made by Elma, with 3 years warranty*
- Compact design - space saving table top unit with wall brackets
- 4.5 bar steam pressure with latest safety technology
- Constant steam pressure level due to high heating power
- Luer-Lock adapter for the perfect cleaning of hollow pieces
- Registered as medical device class I

Elmasteam 4⁵ med

Your reliable helper for difficult cleaning jobs

Certain instruments, such as dental burrs, drills and electro-surgical instruments, often do not become sufficiently clean in the standard washing and disinfecting unit.

The Elmasteam 4⁵ med steam jet cleaner is the perfect unit to solve this problem: by pre-cleaning the complicated instruments the number of insufficiently cleaned items that require to be cleaned again is reduced to a minimum. Diamond burrs for instance will become flawlessly clean with the Elmasteam 4⁵ med.

The Elmasteam 4⁵ med can also be used to pre-clean hollow instruments inside. Instruments with a Luer-Lock connector can be coupled directly to the hand piece (with 1.3 m hose). For the pre-cleaning of hollow instruments without Luer-Lock connector, a set of adaptor pieces is optionally available.

There are two versions of the Elmasteam 4⁵ med:

- **Elmasteam 4⁵ med basic:**
filled manually via the integrated funnel
- **Elmasteam 4⁵ med P:**
unit with pump,
filled automatically
via the water feed
connection on the rear
of the unit

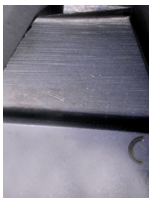


Application examples before and after the cleaning

Hemostatic forceps



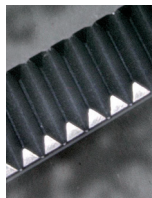
Removal of blood



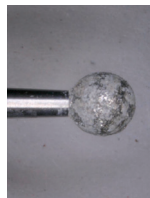
Dissecting forceps



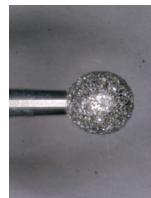
Removal of blood



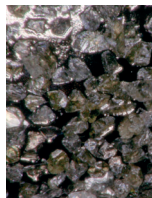
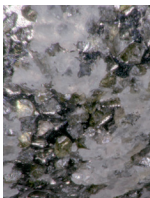
Diamond burr



Removal of bone meal



Diamond burr - Detail



Quality and safety

QUALITY and SAFETY are top priorities at Elma. This means, only tried and tested components and high quality materials are used.

The user is protected due to the high safety standards by Elma and by the TÜV type approval according to DIN EN 61010-1. The "two-chamber-design" consistently separates the water-carrying and the electrical systems. The electrical area is thus protected against any leaks in the water-carrying system which significantly reduces the risk of unit failures.

The pressure tank with a filling volume of approx. 3.3 litres is cast from special material. The heating is integrated into the tank and emits its energy into the water over a large area. Thus the service life of the heating is extended even if the device is operated with tap water. However, the use of de-mineralised water is recommended. By taking these measures and provided that the unit is being operated properly, the usual warranty can be increased to 3 years.

(Wear parts are not covered by the warranty.)



It is recommended that de-mineralised water is used, in order to significantly reduce the maintenance intervals. If mains water is used, regular rinsing out via the safety ball valve in accordance with the operating instructions must be performed using the rinsing set.

Elmasteam 4⁵ med

Thought-out and compact design

Technical data

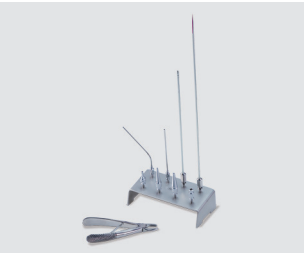
Mains voltage (V)	220 - 240	Pressure tank volume (litres)	4.0
Mains frequency (Hz)	50 / 60	Max. filling volume (litres)	3.3
Max. power consumption - med basic (W)	2800	Operating pressure (bar)	4.5
Max. power consumption - med P (W)	2850	Steam temperature in the tank (°C)	155
Rated power at 230 V - med basic (W)	2130	Steam temperature at the nozzle (°C)	135
Rated power at 230 V - med P (W)	2180	Weight empty - med basic (kg)	6.75
Case material	PC/ABS	Weight empty - med P (kg)	8.05
Dimensions W/D/H (mm)	290 / 320 / 420		
Order numbers:			
Elmasteam 4 ⁵ med without pump, with hand piece (1.3 m hose) and Luer-Lock connector	106 9299	Elmasteam 4 ⁵ med P with pump, with hand piece (1.3 m hose) and Luer-Lock connector	106 8910

Scope of delivery includes:



Tweezers · Sieve · Maintenance hose · Rinsing set · Extra tank cap with safety valve · 3/4" hose for water supply (only with Elmasteam 4⁵ med P)

Further accessories:



Adapter set consisting of 8 parts
incl. pliers for changing the adapters



Steam absorber,
available in various sizes

*3 years warranty for proper use in accordance with the operating manual. Wear parts are not covered by the warranty.